

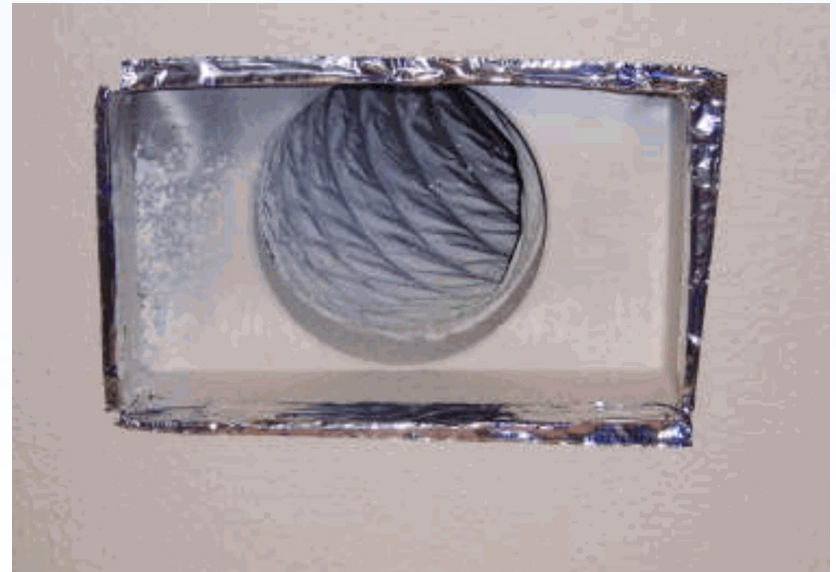
# Examples of Poor & “Good” Measure Installations and Inaccurate Reporting

# Duct Efficiency

Poor workmanship and incomplete treatment



Entire register properly sealed with tape from inside (mastic and silicone may apply)



# Duct Efficiency (cont.)

Joint not properly sealed

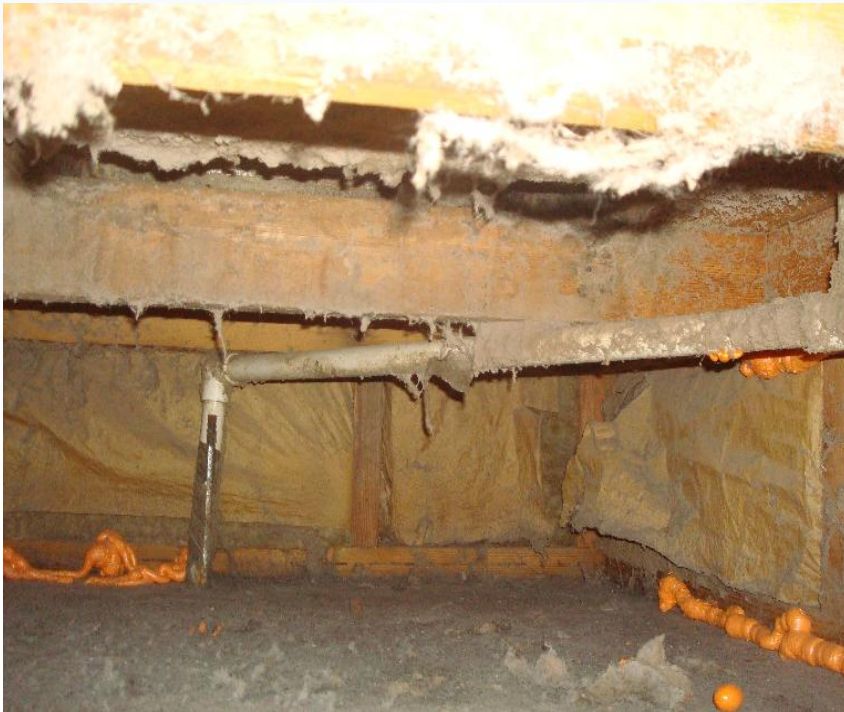


Joint and seams thoroughly sealed



# Duct Efficiency (cont.)

Improper and incomplete treatment of the return air chamber



Proper and thorough treatment



# Air Infiltration

Sloppy and incomplete application



Proper and thorough application



# Air Infiltration (cont.)

No switch plate gasket installed  
as reported



Proper switch plate installation



# Attic Insulation

Inaccurate reporting of existing insulation level

Accurate reporting and thorough installation

